

Annual Report

Silviculture Innovation Program

APRIL 1, 2025 to
MARCH 31, 2026



LAUNCHED!

The SIP officially rolls out its innovative silviculture knowledge hub, the SIP Exchange, or “SIPex”

EXTENSION 101

How extension enhances knowledge to practice of innovative silviculture

ON THE GROUND

Stories, highlights and preliminary learnings from 2024 SIP Grantee projects across BC



Bulkley Valley
Research Centre

Silviculture Innovation Program

EXECUTIVE SUMMARY

The Silviculture Innovation Program (SIP) continues to make meaningful progress towards advancing innovative silviculture across British Columbia, guided by its 2023–2028 Strategic Plan. This work is grounded in four interconnected strategic priority areas:

1. Gap analysis
2. Extend current information
3. Co-create knowledge
4. Build long-term commitment through community

Over the past year, the SIP continued to focus on strengthening the connection between practitioners, knowledge, and on-the-ground application—recognizing that innovation is driven

as much by relationships and shared learning as it is by research and knowledge curation.

Engagement with practitioners remained foundational to SIP’s work. Through targeted workshops, surveys, and direct outreach, the SIP connected with over 140 practitioners to better understand the challenges and opportunities in applying practices such as commercial thinning, prescribed fire, and fuel management. These engagements created space for practitioners to share experiences, identify barriers, and explore solutions collaboratively. Insights gathered are directly informing extension priorities and outputs to support implementation.

COVER PHOTO | Field tour participants at the Woodlots BC SIP Capacity Grant funded workshop titled “*Silviculture Systems: the Good, the Bad and the Ugly*” (credit: Belle Collective Photography for Woodlots BC).

Building on these insights, SIP expanded its extension efforts through a range of approaches. This included the launch of the SIP Exchange (SIPex), a knowledge hub designed to improve access to resources, training, and expertise, alongside continued development of extension notes, practitioner-focused tools, and storytelling initiatives such as the “Out on a Limb” series. Together, these efforts reflect a commitment to making knowledge more accessible, practical, and relevant to those working in the field.

SIP also made significant progress in supporting the co-creation of knowledge through its Grants Program. Across two intakes, more than \$1.8 million has been invested in over 50 projects across the province. These projects bring together practitioners, researchers, and First Nations to test and refine innovative approaches in

real-world settings. Early outcomes demonstrate growing momentum around alternative practices, including increased application of cultural and prescribed fire, development of field-ready tools, and a broader shift toward managing forests for multiple values.

Across all priority areas, the SIP continues to invest in relationships and community. By supporting connections between practitioners, communities of practice, and knowledge holders, the SIP is acting as a catalyst to build the momentum, networks, trust, and capacity needed to sustain innovation over the long-term.

Together, these efforts are contributing to a more connected, adaptive, and resilient forest sector; one where innovation is driven by ideas, shared learning, practical application, and strong, collaborative partnerships.

ABOUT THE SIP

The Silviculture Innovation Program (SIP) is a program of the Bulkley Valley Research Centre based in Smithers, BC on Wet'suwet'en territory. The vision for the SIP is that innovative silvicultural systems are applied widely across British Columbia's forested ecosystems for the stewardship of multiple values. Our mission is to accelerate the growth of innovative silviculture by improving knowledge of these systems in British Columbia.

The SIP primarily supports “**forest practitioners**” - professionals, technicians, researchers, Guardians and stewards involved in the management, conservation, and sustainable use of forest ecosystems. Forest practitioners come from diverse backgrounds and knowledge systems, holding expertise in various aspects of forestry. Forest practitioners work to ensure that forests are managed in a way that balances ecological health, economic needs, and cultural and social values, while addressing challenges like climate change, biodiversity loss, and disturbances such as wildfire.

We hope that SIP products and resources may also be used and/or indirectly inform the work of other broader audiences like policy makers, community members and interested public.



PHOTO | Research field team member Isabel Bodnar taking plot notes (*credit: Ingrid Farnell*).

Annual Report

Silviculture Innovation Program

APRIL 1, 2025 to
MARCH 31, 2026

CONTENTS

Team	1
Making Progress.....	2
Priority Area 1: Gap Analysis.....	2
Priority Area 2: Extend Current Information.....	5
Highlight: SIPex Q&A.....	5
Priority Area 3: Co-Create Knowledge.....	9
Highlight: SIP Grants: Stories of Success.....	10
Priority Area 4: Build Long-term Commitment Through Community.....	18
Outreach & Engagement.....	19
Summary	20
Looking Ahead: Next Steps	20
Contact Information	20
SIP Timeline: Phases & Major Milestones to Date	21

TEAM

The SIP is led by a four-person Leadership Team and supported by a Program Team. The leadership team includes two members representing the Bulkley Valley Research Program and two members representing the Office of the Chief Forester. The Leadership Team is responsible for determining the strategic direction and priorities of the SIP.

The SIP is also supported by a Strategic Advisory Group (SAG). The SAG provides high-level strategic advice and recommendations to the Leadership team. We thank the members of our SAG for dedicating their time and energy to supporting our vision. We also thank the four outgoing members of the SAG for their contributions to the successes of our work this year.



PHOTO | Leadership Team, Program Manager and SAG at the SIP's Annual Strategic Planning session in Vancouver, BC (credit: Matthew Pyper).

To learn more about the SIP Team, check out the SIP website at <https://sip.bvcentre.ca/team>



MAKING PROGRESS

The SIP Strategic Plan (2023-2028) guides the implementation and direction of program activities. Critically, the plan outlines four priority areas for the program:

1. Gap analysis
2. Extend current information
3. Co-create knowledge
4. Build long-term commitment through community

PHOTO | An American Goshawk flies near a SIP Multi-values Research Project plot (credit: Ingrid Farnell).

PRIORITY AREA 1

GAP ANALYSIS

DESCRIPTION

We engage with forest practitioners to identify critical gaps in knowledge and extension supporting the implementation of innovative silviculture. Gaps are identified through needs assessments across multiple scales, such as through broad and open surveys, targeted surveys, focus groups, discussions at conference exhibitor booths, and one-on-one meetings regarding needs.

ACTIONS

- ▶ We partnered with the BC Community Forests Association (BCCFA) to deliver two workshops to assess knowledge gaps for practitioners in **applying commercial thinning practices and prescribed fire**. These workshops provided baseline knowledge of what types of information practitioners need to implement these practices. For each workshop we **facilitated a panel where practitioners could share their experiences in overcoming barriers, accessing permits and hiring skilled operators** to do the work.
- ▶ We delivered an extension workshop titled “Engaging communities in fire and forestry science and practice” in partnership with the University of British Columbia (UBC) Centre for Wildfire Coexistence, Oregon State University Cooperative Extension, University of California Cooperative Extension and Texas Agrilife Cooperative Extension at the International Association of Wildland Fire annual conference. This workshop brought together diverse communities of practice to **share information and experience in fire prevention, management, and resilience**. Practitioners shared knowledge regarding research and outreach/extension efforts to **improve community wildfire resilience through adaptive forestry techniques**.
- ▶ We hosted a workshop with the Wildfire Resilience Consortium of Canada (WRCC) and Simon Fraser University (SFU) Centre for Dialogue to better understand **how to design fuel breaks together with innovative silviculture to manage forests surrounding communities for multiple (but often competing) values**. This workshop engaged 25 leading experts in the fields of fire, forestry and economics to improve costs, understand when treatments are “good enough”, and how to focus on outcomes.

OUTCOMES

SIP WORKSHOPS:

142 SIP WORKSHOP PARTICIPANTS

14 HOURS OF DELIVERED WORKSHOP TRAINING AND/OR SUPPORT WITH PROJECT PARTNERS

Extension priorities and needs assessment for building knowledge networks in forestry, in partnership with UBC and US Cooperative Extension

48 participants
8 hours

Fire & forestry outcomes workshop, in partnership with SFU and WRCC

25
2

Needs assessment & survey for commercial thinning workshop, in partnership with BCCFA

37
2

Needs assessment & survey for prescribed fire workshop, in partnership with BCCFA

32
2

Identifying and understanding gaps through needs assessments

- ▶ We surveyed practitioners and hosted a focus group to identify the extension gaps that the SIP could meaningfully address through the building of a knowledge exchange platform. **The surveys and focus group work helped determine the design and functionality of the SIP Exchange (SIPex) to address extension gaps and the challenges practitioners face in accessing knowledge in support of innovation.**

OUTCOMES

PRE-LAUNCH PREP:

To test usability, relevance and value of the SIPex for practitioners, the SIPex Team surveyed beta-testing participants and hosted a targeted focus group.



176 BETA-TESTERS
SURVEYED
9 FOCUS GROUP
PARTICIPANTS



User-driven iterative product development

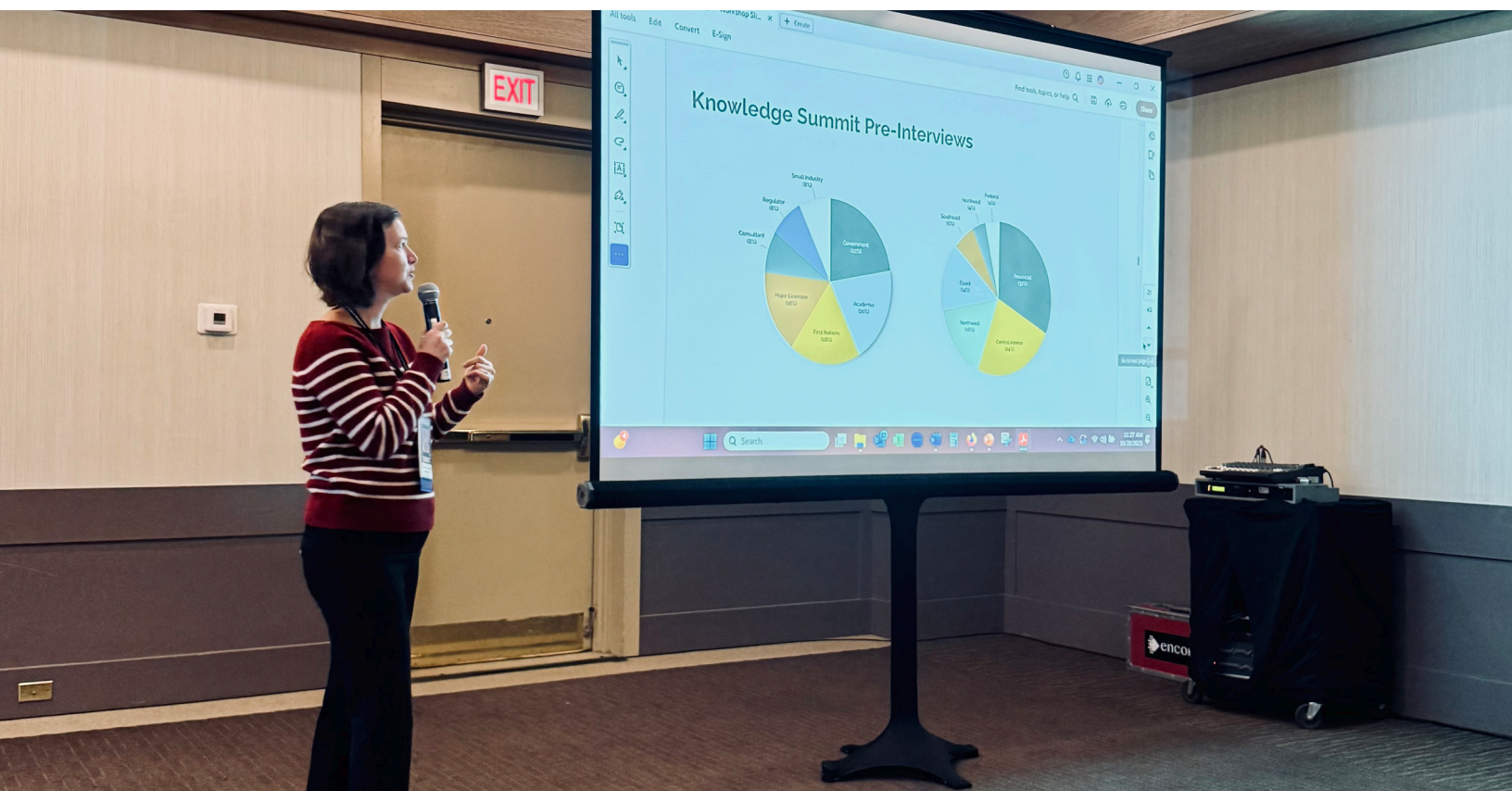


PHOTO | SIP Extension Associate Kelsey Copes-Gerbitz delivering SIP extension workshop material at the International Association of Wildland Fire annual conference (credit: Kira Hoffman).

PRIORITY AREA 2

EXTEND CURRENT INFORMATION

DESCRIPTION

We create extension resources that translate information and knowledge on innovative silviculture practices and approaches. This includes the development of resources such as technical extension materials, as well as considering the ways that practitioners search and access information on innovative silviculture or resources.

ACTIONS

- ▶ In 2025 we **launched the SIP Exchange (SIPex)** to address the major extension gap in having accessible information available to practitioners. The SIPex is a knowledge hub that connects knowledge users to the people (experts), communities of practice, capacity building and resources they need to engage in innovative practice. These form the four pillars of the SIPex: Resources, Community, Training, along with Featured Topics where we synthesize important ideas in forest management and stewardship.
- ▶ We launched our **mixed media series “Out on a Limb”**, visiting forest practitioners around the province to learn more about innovative practices. Our four episodes to date focus on stories told in the field from the coastal forests of Lil’wat First Nation to the dry belt fire forests and grassland of Esk’etemc First Nation. We are excited to continue extending information through different mediums and sharing the work practitioners are proud of.
- ▶ SIP also produced its first **peer-reviewed paper and extension note “How extension enhances the knowledge and practice of innovative silviculture in British Columbia, Canada”** which describes how a combination of extension models can be implemented in BC. We described the history of extension, some of the barriers to valuing many forms of knowledge and also the need for many forms of knowledge transfer. This paper was awarded the Editor’s pick in the Canadian Journal of Forest Research. The extension note that followed, provided a key one-page summary of the full paper.



HIGHLIGHT



Q: Why did the SIP build the SIP Exchange (SIPex)?

A: Creating a searchable, open-access knowledge hub emerged as the top priority from the 2024 SIP Knowledge Summit. The goal of the SIPex is to facilitate access to knowledge, support evidence-based decision making, and increase the application of innovation through this knowledge of innovative practices, values and approaches.



Q: Who is SIPex for?

A: The primary audience of the knowledge hub is **forest practitioners, land stewards, and those whose work influences, or is influenced by, forest practices.** The SIPex is publicly available, meaning everyone has access to learn about forestry practices, but the material is not curated for a public or political audience.

Q: What puts the “ex” in SIPex? Why is this an exchange?

A: Accessing knowledge, continually learning and building a foundation of relevant training and experience will support existing and inspire new innovators and adopters of a wide range of forest practices. Implementing innovative silviculture requires that people have the knowledge and experience to match the practice to the problems they are trying to solve. Forest practitioners strongly rely on their knowledge, experience, education, communities, networks, mentors and peers to shape their practice. To develop a knowledge hub that serves this community means reflecting on the **reciprocal relationship between learning and sharing knowledge.** As a result, we shifted the conceptual foundation of the design from a hub - to an exchange - to recognize that **people can contribute to, or receive from the hub.**

Q: What are the core features of SIPex?

A: The navigation tabs at the top of the SIPex website correspond with the **four pillars of SIPex:** 1) Resource Library, 2) Communities Directory, 3) Training & Education, 4) Featured Topics.

- **Explore Resources tab:** provides access to a searchable, curated online repository of knowledge and information across British Columbia on innovative silviculture practices. This includes (but is not limited to) scientific papers, extension notes, technical reports and guidance documents.
- **Communities of Practice tab:** provides access to Communities of Practice and Experts directories to help users seek advice, recommendations, brainstorm ideas with collaborative support, or make informed decisions about innovative silviculture.
- **Training and Education tab:** provides access to a curated list of training, micro-credit and education opportunities, as well as networks, other online tools (e.g. other web-based knowledge hubs) and funding opportunities.
- **Featured Topics tab:** provides curated resources on specific topics to keep you informed, prepared and ready to engage with forestry’s most pressing issues. Whether you prefer to quickly dive into in-depth reports, learn through interactive tools, or incrementally narrow your focus to build your knowledge base, Featured Topics provides multiple pathways to engage with content in the way that works best for your learning style, empowering curiosity and mastery. Our first featured topic was on fire and forestry.



Q: How can I use SIPex in my day-to-day work as a forest practitioner? What about as a decision-maker? What about as a new student or practitioner?

A: The SIPex serves as a carefully curated knowledge hub that supports learning and decision-making across all stages of forestry practice. For forest practitioners, SIPex offers a diverse collection of resources such as case studies, guidance documents, webinars, and other learning tools that can inform daily work, inspire adaptive approaches, and guide the implementation of innovative silviculture across multiple values. For decision-makers, SIPex provides accessible, evidence-based knowledge to strengthen planning and decision-making. Students and emerging practitioners can use SIPex as a foundation to build knowledge and explore real-world applications. Beyond the resource library, SIPex also offers opportunities to connect with experts and communities of practice, recognizing that forestry knowledge is often collaborative and experiential and that learning is enriched through relationships.

Q: What's up with the squirrel?

A: The little squirrel, affectionately known as “Sippy”, became the SIPex mascot when brainstorming an infographic for the “Featured Topics” landing page. We wanted to represent the different levels that a practitioner could engage with SIPex material: from a “10,000 foot” topic overview, all the way down to a detail-rich deep dive. In keeping with a forest theme and the playful nature of the SIP’s graphic style, we imagined a squirrel as a perfect metaphor to represent qualities found not only in our team of information curators, but also the practitioners we seek to serve: industrious, resourceful, selective, prepared, agile, observant and resilient. The phrase “nuggets of knowledge” kept emerging throughout our meetings, as resources for SIPex continued to be curated, tagged and uploaded to the resource library. So we swapped what a squirrel collects, curates and stores (a lot of cones) for nuggets of knowledge.

Like a squirrel in the forest, SIPex gathers, selects and stores knowledge so it’s ready when and where it’s needed. Sippy also makes a great sticker for your coffee mug (come find us at a forestry conference trade show booth near you)!



Check it out online! →

www.sipexchangebc.com



OUTCOMES

SIP EXTENSION:



FEATURED TOPICS

1st TOPIC LAUNCHED
 Managing for and with fire

RESOURCE LIBRARY DEVELOPMENT



400 RESOURCES AVAILABLE

in a curated library covering innovative forestry practices & tools across BC's diverse forests

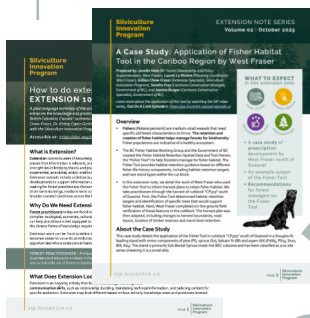
DIRECTORIES DEVELOPMENT



50 COMMUNITIES OF PRACTICE

29 EXPERTS AVAILABLE

2 SIP EXTENSION NOTE SERIES
NEW EXTENSION NOTES



- **Extension 101:** How to do extension in forestry in BC
- **A Case Study:** Application of Fisher Habitat Tool in the Cariboo Region



OUT ON A LIMB
3 NEW EPISODES PUBLISHED
2500+ VIEWS

ACROSS ALL EPISODES

Episode 2: West Fraser, Esketemc Lands and Resources Guardians, the Ministry of Lands, Water and Resource Stewardship, Office of the Chief Forester and the BC Fisher Habitat Working Group

Episode 3: Alkali Resource Management, Water and Resource Stewardship, Office of the Chief Forester

Episode 4: Harrop-Procter Community Forest

CONNECTED RESOURCES

the SIP produced an extension note and operator field card as companion resources for Episode 2 of *Out on a Limb* (managing fisher habitat).



SIP OPERATOR CARD TEMPLATE

Designed and illustrated by the SIP

1st SIP PUBLICATION

"How extension enhances the knowledge and practice of innovative silviculture in British Columbia, Canada"

<https://cdnsiencepub.com/doi/10.1139/cjfr-2025-0036>



WILDLIFE CARDS

featuring photos from trail cameras across the Wet'suwet'en Yintah, with English and Wet'suwet'en animal names, season and time of day photos were taken, and a map of the general location



2 MAGAZINE ARTICLES

BC Forest Professional Magazine

Summer '25: SIPex: A Gateway to Innovative Silviculture
Fall '25: Building Communities of Practice in BC



PRIORITY AREA 3

CO-CREATE KNOWLEDGE

DESCRIPTION

This priority area focuses on supporting the co-creation of knowledge and resources that contribute to a deeper understanding of innovative silviculture. The SIP conducts research to fill knowledge gaps, as well as help fund projects that can address important knowledge gaps through extension of innovative practices and approaches, collecting data on multiple values, and supporting collaborative initiatives to complex problems.

ACTIONS

- ▶ In October 2025 we launched a **second intake of the SIP Innovation in Action Grants Program**. The SIP Grants Program was established to address a persistent gap in British Columbia’s forest sector: the limited application of innovative silviculture despite growing interest, need, and knowledge. At its core, the program supports both knowledge creation and knowledge sharing—recognizing that innovation is not only about generating new research, but also about elevating and extending practices that are already happening.
- ▶ We **continued to support our 2024 SIP Grantees** as they continue to work on their projects across BC. Several grantees provided us with their Halfway Reports and some with their Final Reports, both of which include a public-facing, “blog style” narrative summary of their project progress, challenges and successes. We have **posted grant project progress summaries to the SIP website to celebrate and share learnings** with engaged public, practitioners, current and future grantees.
- ▶ We continued to **experiment with monitoring protocols to support assessing the impacts of innovative practice on multiple values**. The modular protocols were used to assess wildlife habitat, fuels, forest structure, and timber in sites that ranged from 3 to 35 years after harvest. The Office of the Wet’suwet’en monitored wildlife use of the 64 sites that are part of this retrospective study on stand development after innovation in the sub-boreal through trail camera servicing and tagging tens of thousands of images throughout the winter months.

OUTCOMES

SIP RESEARCH:

IN COLLABORATION WITH THE OFFICE OF THE WET’SUWET’EN

42 TOTAL VEGETATION PLOTS ESTABLISHED

1 LAND-BASED LEARNING EVENT HOSTED

CREATED & TESTED MODULAR MONITORING PROTOCOLS

to measure multiple values (wildlife habitat, forest structure, fuels, timber).

113,000+

WILDLIFE IMAGES

collected, offloaded, tagged and ready for analysis after another year of image collection.





HIGHLIGHT

SIP GRANTS

STORIES OF SUCCESS

What sets the SIP Grants Program apart is its focus on multiple values and extension. Projects are designed to test and generate ideas as well as ensuring that the lessons learned are accessible, transferable, and grounded in real-world application.

WHAT WE FUNDED

The inaugural SIP Grants intake in Fall 2024 demonstrated strong interest from across the province, receiving 69 applications and funding 33 projects with a combined investment of over \$1 million. This funding supported a wide range of activities that included action on-the-ground, as well as practitioner and community-centred knowledge sharing. The Fall 2025 SIP Grants intake provided an additional investment of over \$800,000 to support 21 new grantees in March who are now beginning their projects. **Combining both intakes, the SIP has supported over 50 innovative silviculture projects across BC with over \$1.8 million of grant funding...and counting!**



PHOTO | from Malcolm Knapp Research Forest’s SIP Grant Project “Restoration of industrial conifer plantations to recover ecosystem integrity”: a drone photo showing side-by-side comparison of 30% retention (left) with unharvested control (right) (credit: Sergio Alonso).

OUTCOMES

SIP GRANTS: *What are we seeing so far?*

EARLY OUTCOMES & EMERGING IMPACTS

Across funded projects, early outcomes point to meaningful shifts in practice, knowledge, and relationships. While many projects are still underway, several consistent themes are emerging.



DEMONSTRATING WHAT IS POSSIBLE

- ▶ Projects are **demonstrating how alternative approaches to forest management can support economic outcomes** while creating additional ecological, cultural, and social benefits.
- ▶ Projects are **increasing community support and normalization of cultural and prescribed fire (“good fire”) as a tool** for improving ecosystem health, community safety, and food security.
- ▶ More broadly, a **shift in mindset is emerging from asking “how can the forest support me?” to “how can we better support the forest?”**. This reflects a move toward stewardship approaches that prioritize full rotation management for multiple values.

TOOLS, METHODS, AND APPROACHES

Several projects are **developing and testing practical tools and approaches** that can be readily applied by practitioners, including:

- ▶ **Field-ready guidance** on maintaining and promoting old forest attributes.
- ▶ **New methods for documenting the distribution and condition of cultural and medicinal plants**, integrating Indigenous and western knowledge systems, and providing a framework for secure, accessible data collection and storage.
- ▶ **Approaches to long-term monitoring**, including revisiting previously treated stands to assess ecological outcomes over time.
- ▶ **Collaboration across projects and regions**, creating opportunities to share learning, refine methods, and build on each other’s work.





KNOWLEDGE EXCHANGE

Knowledge exchange is a central outcome across many projects. **Community meetings, field tours, and workshops are creating space for two-way learning between researchers, practitioners, First Nations, and community members.** These gatherings support:

- ▶ Sharing research findings in accessible ways
- ▶ Identifying community priorities and challenges
- ▶ Co-developing future research and management approaches

Projects are also supporting land-based learning events. For example, grants have supported **opportunities for Indigenous community members to reconnect with culturally significant plants, practices such as cultural burning, and place-based knowledge.**

Across projects, there is a strong sense of renewed curiosity and optimism with practitioners and communities exploring new ideas, revisiting older practices, and adapting approaches based on shared learning.

STRENGTHENING RELATIONSHIPS & BUILDING CAPACITY

One of the most significant early impacts is the strength of **relationships being built.** **Projects are fostering collaboration** across:

- ▶ Indigenous communities and organizations
- ▶ Academic researchers and practitioners
- ▶ Government, industry and local communities

There is particular value in intergenerational knowledge exchange, where Elders, experienced practitioners, researchers, and youth are learning from one another. These relationships are **supporting current projects and building the networks and trust needed for future work.**

Investing in these relationships is essential to advancing innovative silviculture in ways that are locally relevant, reflect emerging best practices and culturally grounded.

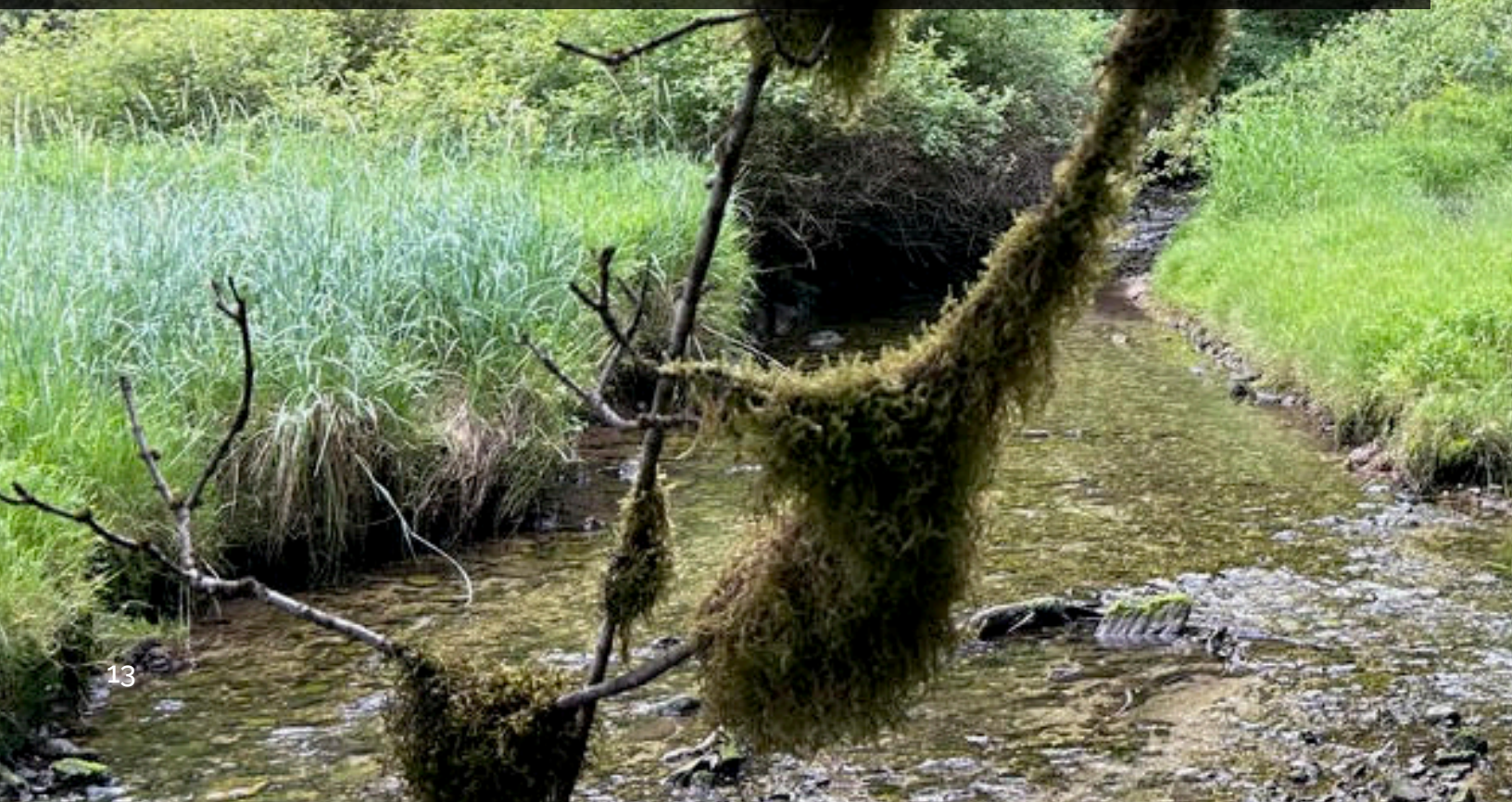
PHOTOS | **Bottom left:** from SERN BC's project "Evaluation of Moose Forage and Habitat on Variably Thinned Stands: Understory Plant Ingress and Media Extension" (*credit: Brandon Geldart*); **Top right:** from Shifting Mosaics Corporation's project "NEBC Prescribed Fire Planning in an Eco-Cultural Pyric Herbivory Context" (*credit: Sonja Leverkus*).



CAPACITY BUILDING GRANTS

CAPACITY BUILDING

Fifteen projects were provided small, one-year grants to support early-stage ideas, relationship building, and skill development. These projects emphasize outcomes such as knowledge exchange, training, collaboration, and partnership development, particularly with Indigenous communities and knowledge holders, laying the foundation for future work.





PHOTOS | **Left:** from NEBC Prescribed Fire Council's project "Wildland Fire Training": participants taking part in leadership training (*credit: Sonja Leverkus*); **Middle:** from SXDC's project "Stswecem'c Xget'tem Forest Gathering & Tending": Ministry of Forests Vegetation Ecologist Kristi Iverson with SXFN Lead Guardian Ike Boston and Guardian Team (*credit: Sonja Seher*); **Right:** from Spel'kúmtn Community Forest's project "Building Relationships, Braiding Knowledge": field tour participants inspecting an affected branch to learn about the life cycle of the spruce budworm (*credit: Andrea Blaikie*); **Below:** from Kwiakah First Nation's project "Sasiwala: Kwiakah led community gathering and knowledge sharing workshop": community members walking to Forest Garden in Kwiakah Territory (*credit: Gavin Woodburn*).





INNOVATION IN **ACTION** GRANTS

INNOVATION IN ACTION

Thirty-nine projects were funded to support operational trials and applied research. These projects focus on learning through doing, helping to reduce financial barriers to implementation while generating practical, evidence-based learnings. This funding prioritizes sharing the lessons from innovation grants broadly to support uptake and adaptation across the province.





PHOTOS | Top left: from Shifting Mosaics Corporation’s project “NEBC Prescribed Fire Planning in an Eco-Cultural Pyric Herbivory Context”: Ignition Specialist-in-Training Donovan Napalm Bertrand leads Larry Fossum through ground ignition operations at the Bear Mountain Community Pasture learn ‘n burn supported by the NFWRx crew and Fastfield production team. (*credit: Sonja Leverkus*). **Bottom left:** from Mothertree Consulting Ltd.’s project “Overstory retention and climatic stress: effects on microclimate, biodiversity, and regeneration in forests of British Columbia”: downloading the first three months of temperature and humidity data in a 60% retention treatment (*credit: Suzanne Simard*); **Top right:** from Clinton Community Forest’s project “Cost and efficacy of combining understory resilience treatments with sawlog harvesting operations in the Dry-Belt Douglas-fir”: block 7 untreated (left) and treated (right) after logging and mulching understory (*credit: Ken Day*); **Middle:** both images from Malcolm Knapp Research Forest’s (MKRF) SIP Grant Project “Restoration of industrial conifer plantations to recover ecosystem integrity”: **middle left:** Harvester operating in a 30% retention cutblock at the MKRF. You can see “L” markings on the tree – meaning “Leave Trees” (*credit: Omar Mologni*); **middle right:** Project Lead H el ene Marcoux giving a demo of harvester/forwarder equipment to a public tour held on Feb 21, 2026 in Maple Ridge (*credit: Ally Penders*).

SIP GRANTS: NEXT STEPS

Building on the momentum of the inaugural intake, the SIP Grants Program will continue to support projects that bridge knowledge and practice, strengthen partnerships, and advance innovative approaches to forest stewardship.

As projects progress, there will be increasing opportunities to share results, refine practices, and scale successful approaches across regions. Continued emphasis will be placed on knowledge extension, Indigenous leadership, and collaborative learning to ensure that innovation is both practical and widely accessible. Many project outputs will find a home on the SIP's knowledge hub, SIPex, further enhancing the investment and impact of the Grants Program.

PHOTO | Office of the Wet'suwet'en Field Technician Kimberly Alec and BVRC-SIP Resesarch Officer Ingrid Farnell download wildlife camera data in the field in a research plot near Morice Lake, south of Houston, BC (credit: Laura Stanton).



PRIORITY AREA 4

BUILD LONG-TERM COMMITMENT THROUGH COMMUNITY

DESCRIPTION

We support knowledge exchange between peers, as well as within and amongst Communities of Practice (CoP). We aim to increase connections between different CoP and create opportunities for knowledge sharing between experienced and new practitioners. This priority area also seeks to address the social dimensions of innovative silviculture implementation, which can be critical to creating lasting change.

ACTIONS

- ▶ An important learning from the Knowledge Summit as well as CoP and Knowledge Hub (SIPex) surveys and focus groups was that forest practitioners learn from each other and from mentors. To support practitioners increasing their knowledge and capacity in innovation, we developed the “Community” page on the SIPex. Practitioners can now search or scroll through a list of CoP and a virtual rolodex of experts to find the people and groups that can support practitioners by answering questions, gaining experience or sharing insights.
- ▶ We continue to support existing CoP, such as the various regional and sub-regional silviculture committees and working groups, as well as existing and emerging organizations that support provincial and regional extension. Support this year included delivering program updates, delivering and hosting sessions and workshops, and continued engagement to determine how the SIP can meaningfully contribute to CoP success.

PHOTO | SIP Director of Research Dr. Alana Clason delivers a SIP presentation to the Woodlots BC Annual Conference participants in Osoyoos, BC (credit: Belle Collective Photography for Woodlots BC).






OUTCOMES

SIP OUTREACH & ENGAGEMENT

The SIP participated and/or presented at over a dozen forestry events, workshops or conferences this year. We welcomed the opportunities to extend our work and knowledge, hear from practitioners firsthand about their needs, and gather feedback on our ongoing work. It was a pleasure to connect with colleagues, old and new, and continue to build our networks and communities of practice.

LEGEND

-  Workshop Delivery
-  Tradeshow Booth
-  Speaking Engagement

1 Council of Forest Industries (COFI)

Annual Convention | Prince George
April 2025

Northern Silviculture Committee (NSC)

Winter Workshop | Prince George
February 2026 ★

2 FireSmart Canada

Wildfire Resilience & Training Workshop | Penticton
April 2025 ★

3 BC Community Forests Association (BCCFA)

Annual Meeting | Nanaimo
June 2025  

4 Kootenay Watershed Collective

Seminar Series | Nelson
September 2025  ★

5 Southern Interior Silviculture Committee (SISCO)

Fall Field Tour | Williams Lake
October 2025 ★

6 Wildfire Resilience Consortium of Canada (WRCC)

Building Foundational Wildfire Knowledge | Kamloops
October 2025 ★

7 Woodlots BC

Annual Meeting | Osoyoos
October 2025  ★

8 University of British Columbia (UBC) and Honourable Minister Parmar

Wildfire Symposium | Vancouver
December 2025

Truck Loggers Association (TLA)

Annual Conference | Vancouver
January 2026

Forest Professionals BC (FPBC)

Annual Meeting | Vancouver
February 2026 



SUMMARY

LOOKING AHEAD: NEXT STEPS

In the coming year, the SIP will focus on continued implementation of activities that create and share practical knowledge on innovative silviculture. Some anticipated areas of focus include:

- ▶ Create lasting and deep engagement between the SIP and forest practitioners using place-based, regionally-rooted approaches including workshops, field tours, and outreach of extension products, such as the SIPex.
- ▶ Increase the number and diversity of extension outputs currently delivered by the SIP including decision-support tools, monitoring templates and more.
- ▶ Create and foster productive partnerships and collaborations across the forestry sector
- ▶ Continue to prioritize making knowledge accessible through the SIPex platform
- ▶ Prioritize strategies, tactics and actions that can uplift, integrate or create space for Traditional Ecological Knowledge in respectful, ethical and meaningful ways
- ▶ Support a third round of grants to support innovation and knowledge emerging from current and planned operational applications of innovative practice
- ▶ Sharing the lessons learned from innovators funded through the SIP grants program and from the BC Forest Enhancement Society (FESBC)
- ▶ Continue to support the people and communities behind the process of innovation

EXPRESSING GRATITUDE

We would like to thank all of our supporters, collaborators and partners, colleagues and experts, and the forest practitioner community. Our work is influenced and strengthened by the engagement of the broader community and would not be possible without your support. From surveys to needs assessments, focus groups and webinars, to phone calls and one-on-one conversations - we appreciate every opportunity to hear from practitioners and discuss how we can support innovative silviculture.

CONTACT INFORMATION



Subscribe to our newsletter for regular updates

<https://sip.bvcentre.ca/subscribe>



Reach out to us!

sip.info@bvcentre.ca



Follow us on socials

LinkedIn: Silviculture Innovation Program

Instagram: @silviculture innovation

Facebook: Silviculture Innovation Program

TIMELINE of the SIP

YEAR 1: FOUNDATION BUILDING PHASE

MARCH 2023 | Silviculture Innovation Program (SIP) established. BVRC receives \$10 million from the Government of BC to design and implement a silviculture innovation program.



APRIL 2024 | Knowledge Summit
What We Heard released: A synthesis of collective insights from the Summit; translating dialogue into action — demonstrating participant input directly informs SIP priorities. #1 priority = build a knowledge hub!



FEBRUARY 2025 | Communities of Practice Survey
What We Heard released: SIP delivers a plenary session at the FPBC Annual Meeting in Victoria, BC.

SEPTEMBER 2024 | SIP Grants Program Launches

MARCH
2023

2023

APR MAY JUN JUL AUG SEP OCT NOV DEC JAN FEB MAR

2024

APRIL
2024

2024

MAY JUN JUL AUG SEP OCT NOV DEC JAN FEB MAR

2025

JUNE 2023 | Program kickoff meeting. Explore and define the scope of the SIP, identify key steps to successful implementation, allocate pools of funds to research, extension and grants.

JUNE 2024 | Knowledge Hub design & build begins



MARCH 2025 | "Out on a Limb" extension series launches.

JULY 2024 | Communities of Practice survey launches and receives 587 respondents (completed August 30, 2024).

JANUARY 2024 | BC Minister of Forests Hon. Ravi Parmar visits the BVRC in Smithers

KNOWLEDGE SUMMIT
MARCH 11-13th, 2024
VANCOUVER, BC

Silviculture Innovation Program



MARCH 2024 | Knowledge Summit. Gather a diverse group of 70 practitioners from across BC to host a needs assessment for innovative silviculture priorities within established scope. Recruit diverse insights and ideas to inform program priorities.



1st SIP Grantees notified, projects begin: SIP awards 33 projects a combined total of over \$1 million.

YEAR 2: LAUNCH & EMERGENCE PHASE

YEAR 3: PARTNERSHIPS & IMPACT PHASE

Silviculture Innovation Program



APRIL-MAY 2025 | SIPEX beta testing, user survey and focus group: test usability, relevance and value of SIPEX with the target audience: practitioners.

APRIL 2025 | 1st SIP Annual Report released

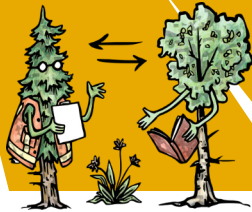


AUGUST 2025 | Launched SIP Extension Note series: Provides accessible, usable guidance to practitioners, clarifying extension's role and importance in supporting innovation on the ground.

JANUARY 2026 | Partnership with FESBC established: Formal partnership and co-funded extension position to amplify outcomes from both FESBC and SIP Grants.



JUNE 2025 | 1st SIP peer reviewed manuscript on extension: "How extension enhances the knowledge and practice of innovative silviculture in British Columbia, Canada" in the Canadian Journal of Forest Research.



MARCH 2026 | SIP Grant award notifications, projects begin: SIP awards 21 projects a combined total of over \$800,000.



MAY 2025 | Workshop and collaborative extension with BCCFA: Co-hosted a commercial thinning session and prescribed fire session at the BCCFA conference in Nanaimo; multi-partner "Fuel For Thought" explainer introduced and distributed.



OCTOBER 2025 | The SIP Exchange (SIPEX) launches, the SIP's new innovative silviculture knowledge hub.



Second SIP Grants intake launches



Follow our progress as we **SUSTAIN & SCALE** the SIP in 2026/27!



★ YOU ARE HERE

YEAR 4: SUSTAIN & SCALE PHASE



Annual Report

**Silviculture
Innovation
Program**

APRIL 1, 2025 to
MARCH 31, 2026