



HARROP PROCTER COMMUNITY CO-OPERATIVE

202-284 3rd Avenue, Procter BC V1L 0B8
(250) 229-2271 www.hpcommunityforest.org



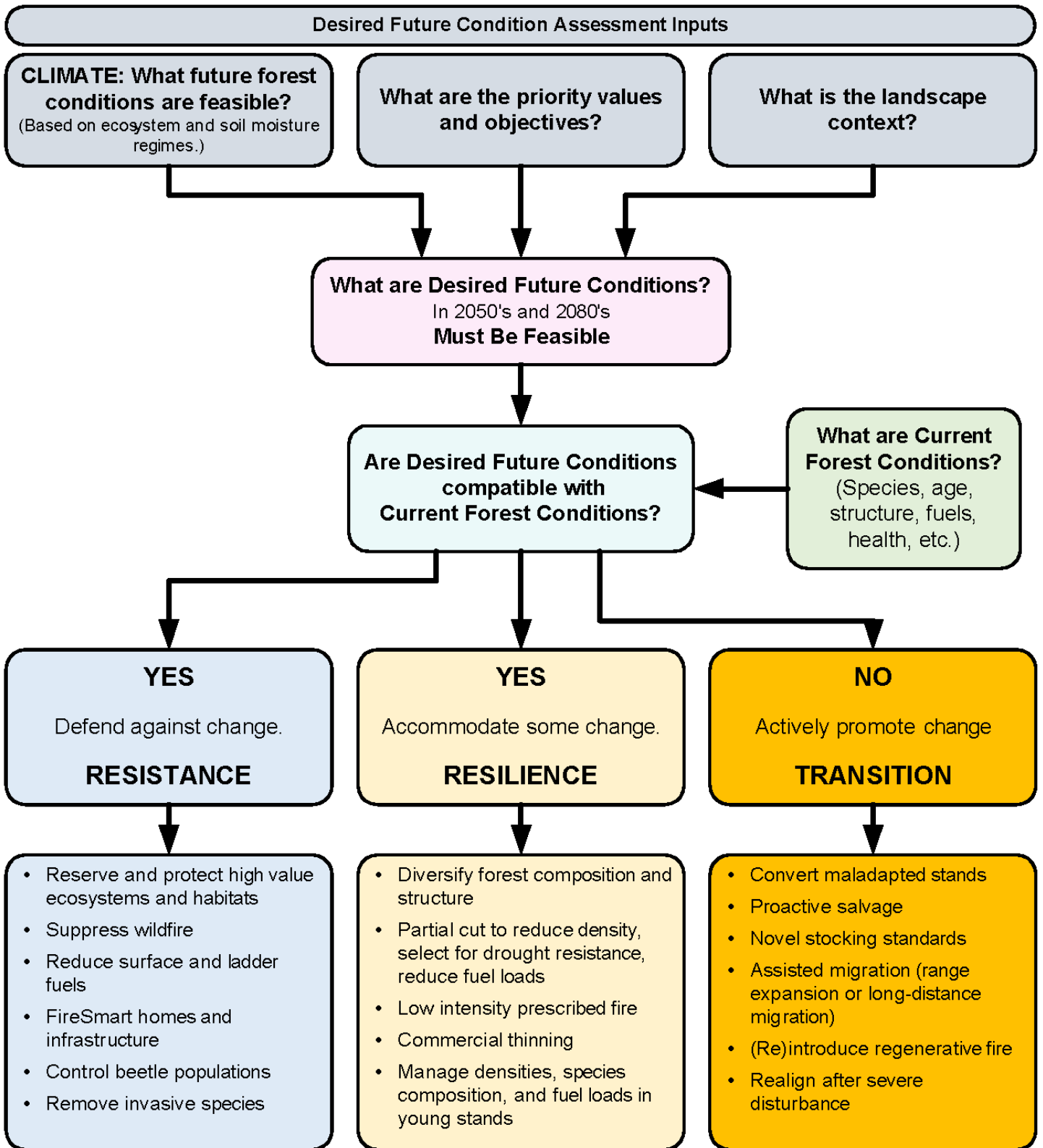
Harrop Procter Community Forest

Climate adaptation strategies and tactics: Three example sites



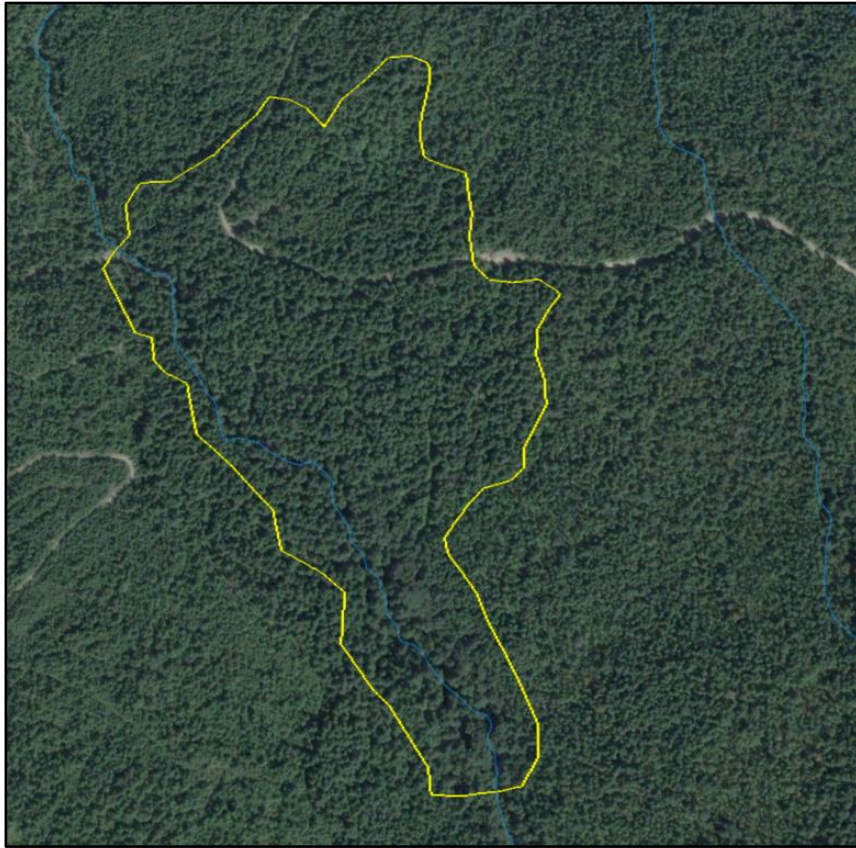
Table of contents

RESISTANCE STRATEGY: Lower Procter Creek older forest	3
RESILIENCE STRATEGY: Harrop CP152 WUI treatment	6
TRANSITION STRATEGY: Procter CP153 highgraded forest	10



RESISTANCE STRATEGY: Lower Procter Creek older forest

Location	Lower Procter Creek
BEC subzone and site series	ICHdw1 – 101 / 110 (111)
Species	Hw Cw (Fd Lw Pw)
Stand age and origin	120 – 160 years old, highgraded in 1970's
Priority values	Biodiversity, Water, Homes
Landscape considerations	Isolated old growth patch, includes rare moist site
1990 ASMR	Slightly Dry to Fresh (Moist)
2055 ASMR	Moderately Dry to Fresh (Moist)
Drought probability 2055 climate	Moderate (Low)
Fire probability 2055 climate	Moderate
Desired future conditions (DFC) (2050+)	Stand continuing to develop more old forest characteristics
Are DFC compatible with current conditions?	Yes – defend against disturbance
Key deciding factors	Old growth, uncommon site, moist, moderate surface/ ladder fuels
Adaptation approach	Resist
Operational strategy	Reserve and protect
Tactics and silviculture	Develop linear fuel breaks (manual understory fuel treatments) within 10 meters of perimeter road and two old skid trails to reduce likelihood of wildfire impacts to old forest values



Location of older forest in lower Procter Creek



Older forest type in lower Procter Creek



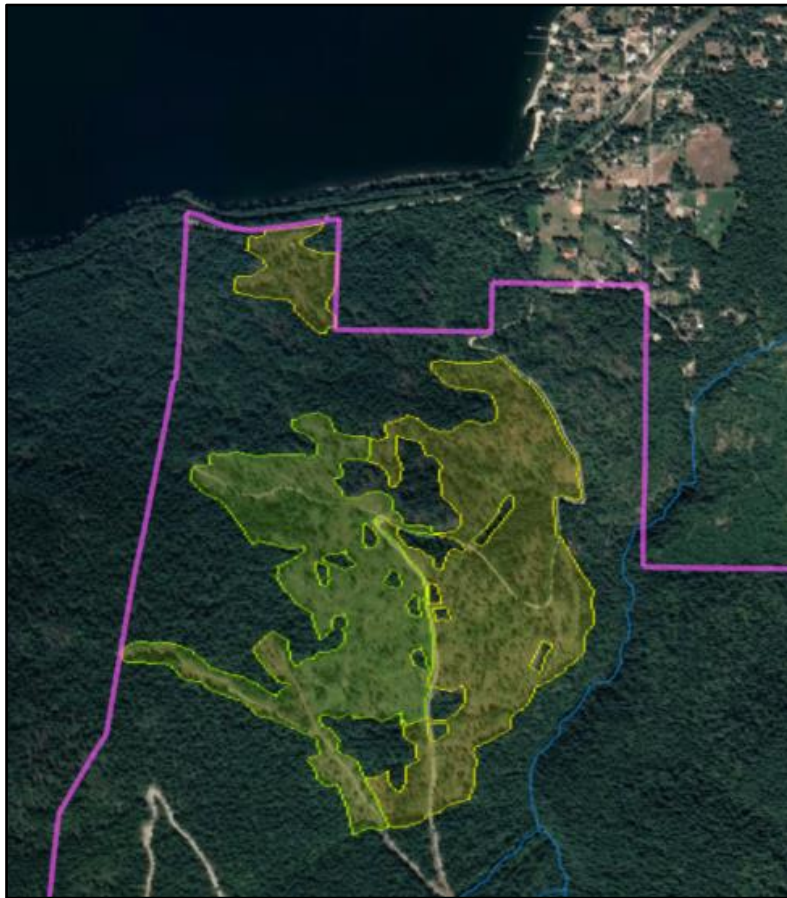
Moist area with some older forest structure



Linear hand treatment adjacent to old skid trail to create fuel break

RESILIENCE STRATEGY: Harrop CP152 WUI treatment

Location	Harrop CP152 Blk1
BEC subzone and site series	ICHdw1 – 104 (101)
Species	Fd Cw (Lw Hw Ep At)
Stand age and origin	~100 years old, fire origin
Priority values	Homes, timber (biodiversity)
Landscape considerations	Strategic location for anchoring landscape fuel break
1990 ASMR	Slightly Dry – Moderately Dry
2055 ASMR	Moderately Dry – Very Dry
Drought probability 2055 climate	Moderate to High
Fire probability 2055 climate	Moderate to High
Desired future conditions DFC (2050+)	Partially shaded fuel break. Semi-open mature (old) Fd Lw, low fuels, well developed deciduous shrub/ herb layers
Are DFC compatible with current conditions?	Yes – but some change desired
Key deciding factors	Sufficient healthy mature overstory Fd (Lw)
Adaptation approach	Resilience (stand level)
Operational strategy	Diversify composition & structure; reduce density
Tactics and silviculture	Partial cut, retain Fd Lw Ep At, cut Cw/Hw Fire management partial cut stocking standard Consider conifer slashing and/or low intensity burn as maintenance treatment



Location of CP152 in wildland-urban interface



Douglas-fir leading type



Immediate results after partial harvest



Pile burning post-harvest treatment



Results 1 year after resilience treatment



Results 4 years after resilience treatment

TRANSITION STRATEGY: Procter CP153 highgraded forest

Location	West Procter CP153
BEC subzone and site series	ICHdw1 – 101
Species	Hw Cw (Fd Lw)
Stand age and origin	40 years old, heavily highgraded in 1970's, not planted
Priority values	Homes, timber
Landscape considerations	Surrounding area is all dense conifers, low diversity
1990 ASMR	Slightly Dry
2055 ASMR	Moderately Dry
Drought probability 2055 climate	High
Fire probability 2055 climate	High
Desired future conditions (DFC) (2050+)	Semi-open drought-tolerant overstory; deciduous understory with low density Py Lw Fd
Are DFC compatible with current conditions?	No – transformation required
Key deciding factors	Previous highgrading led to poorly adapted stand development pathway Insufficient Fd (Lw) for high retention
Adaptation approach	Transition
Operational strategy	Stand conversion, develop lower density stand with significant deciduous component
Tactics and silviculture	Seed tree cut with retention clumps, remove Hw & Cw WUI regeneration stocking standard, target 400 sph Plant low density Lw Py (Ep) Conifer spacing after 7 – 10 years: remove Hw and Cw



Pre-treatment stand conditions – unhealthy hemlock - cedar overstory and understory



Buncher bundle showing large numbers of small hemlock and cedar removed



Debris piling completed, trail left in place for wildfire access



Transition treatment completed, 3 years post-harvest, planted Ponderosa pine